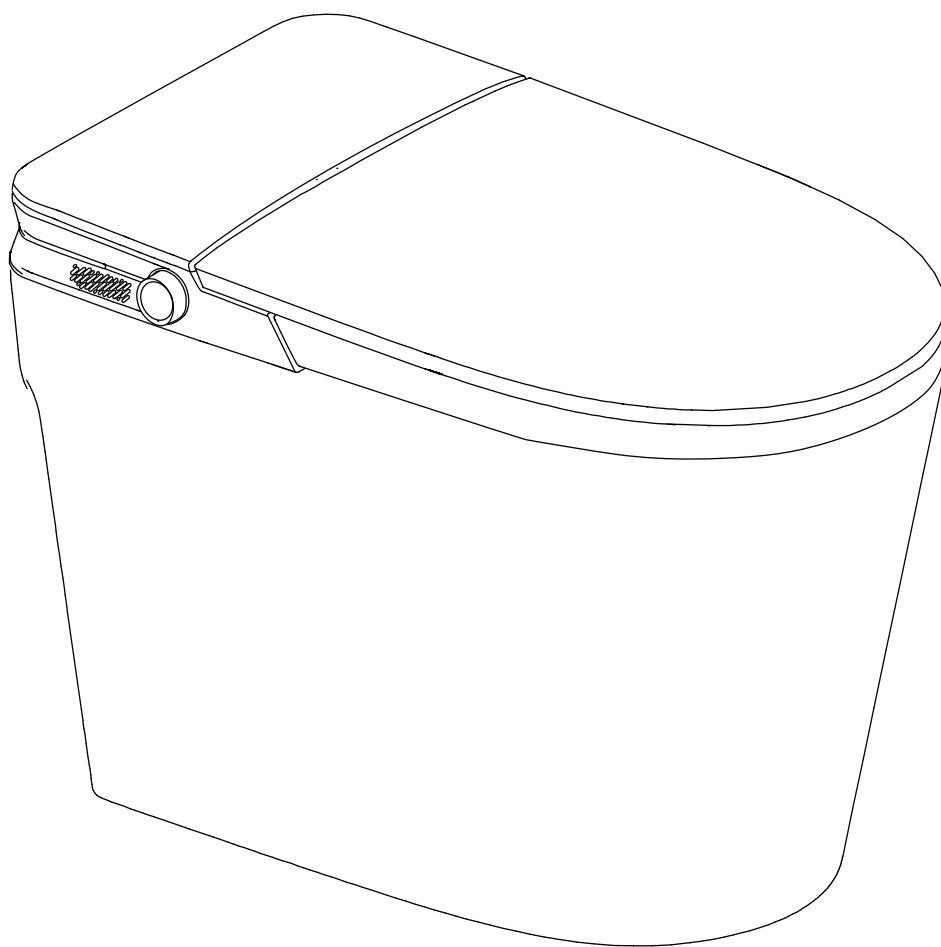


PREMIUM A CSTPA0
PREMIUM B CSTPB0

Smart Toilet



FORNIO
ACQUA®

Manual

TABLE OF CONTENTS

Important Safeguards.....	2	Cleaning and Maintenance.....	12
Grounding Instructions.....	3	Troubleshooting.....	12
Tools Required.....	3	Technical Data.....	13
Precautions.....	4	Communication Device Caution.....	13
Overall Major Components.....	6	Warranty.....	14
Exploded View and Package Contents...	7	Customer Care.....	15
Smart Toilet Installation.....	8		
Testing After Installation.....	9		
Functions.....	10		

IMPORTANT SAFEGUARDS

SAVE THESE INSTRUCTIONS

When using electrical products, especially when children are present, basic safety precautions should always be followed, including the following.

READ ALL INSTRUCTIONS BEFORE USING



DANGER - To reduce the risk of electrocution:

1. Do not use while bathing.
2. Do not place or store product where it can fall or be pulled into a tub or sink.
3. Do not place in or drop into water or other liquid.
4. Do not reach for a product that has fallen into water. Unplug immediately.



WARNING - To reduce the risk of burns, electrocution, fire or injury to persons

1. Close supervision is necessary when this product is used by, or near children or disabled people.
2. Use this product only for its intended use as described in this manual. Do not use attachments not recommended by the manufacturer.
3. Never operate this product if it has a damaged cord or plug, if it is not working properly, if it has been dropped or damaged or dropped into water. Call Customer Care or return the product to a service center for examination and repair.
4. Keep the cord away from heated surfaces.
5. Never block the air openings of the product or place a soft material on top of it, such as a towel, clothes or a pillow, where the air openings may be blocked. Keep the air openings free of lint, hair and the like.
6. Never use while sleeping or drowsy.
7. Never drop or insert any object into any opening or hose.
8. Do not use outdoors or operate where aerosol (spray) products are being used or where oxygen is being administered.
9. Connect this product to a properly grounded outlet only. See Grounding Instructions.

GROUNDING INSTRUCTIONS

This product should be grounded. In the event of an electrical short circuit, grounding reduces the risk of electric shock by providing an escape wire for the electric current. This product is equipped with a cord that has a grounding wire with a grounding plug. The plug must be plugged into an outlet that is properly installed, grounded and GFCI protected.

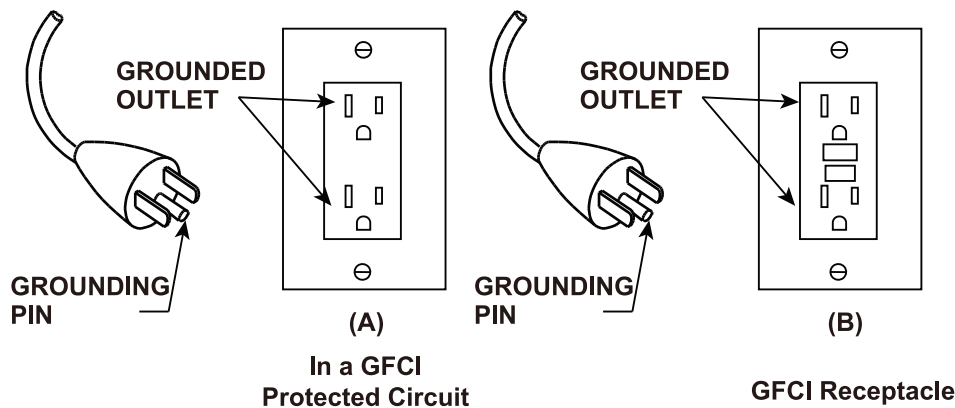


DANGER - Improper use of the grounded plug can result in risk of electric shock

If repair or replacement of the cord or plug is necessary, do not connect the grounding wire to either flat blade terminal. The wire with insulation having an outer surface that is green with or without yellow stripes is the grounding wire. Check with a qualified electrician or serviceman if the grounding instructions are not completely understood, or if in doubt as to whether the product is properly grounded.

This product is for use on a nominal 120 V circuit, that has a grounding plug that looks like the plug illustrated in diagram A and is protected by a GFCI circuit breaker or with a GFCI receptacle as the one illustrated in diagram B.

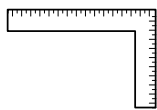
Grounding Methods



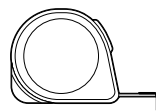
TOOLS REQUIRED



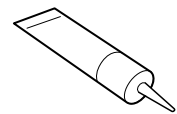
Safety Goggles



Carpenter's Square



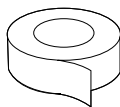
Measuring Tape



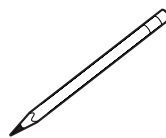
Silicone Sealant



Wrench



Teflon Tape



Pencil

PRECAUTIONS

- Read this manual carefully, so that you can use the product correctly. Read through all the precautions listed here, they are important content related to safety.
- Failure to install the product in accordance with this manual or failure to use the specified components during the installation may cause fatal injuries or accidents.

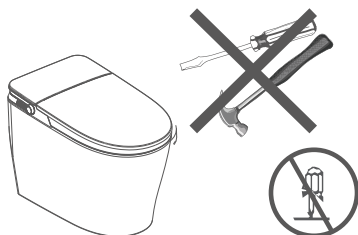


Children should only use this product supervised.

Temperature settings should be set on low or off when children or elderly people are using this toilet.

Do not disassemble, repair or transform the product yourself

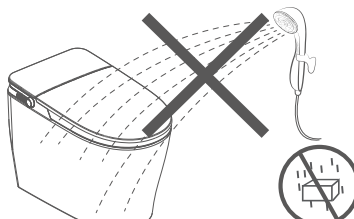
- It may cause fire, electric shock and other accidents or injuries.



Do not Fix

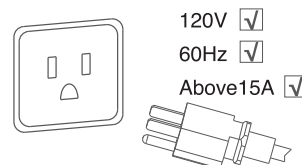
Do not pour water or detergent on the product or power plug

- It may cause fire, electric shock and other accidents or injuries.



Do not soak

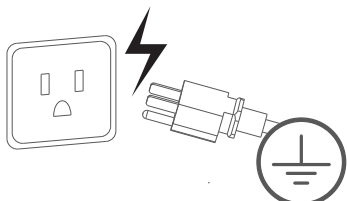
Use an AC120V,60Hz 15A receptacle.



Compulsory

Ground connection: Please ensure that the power receptacle is grounded.

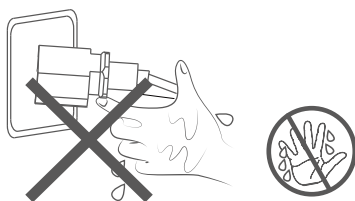
- Non-grounded receptacle may pose an electric shock hazard.



Grounded

Do not use wet hands to plug or unplug the power.

- May cause an electric shock.



Do not touch with wet hands

Avoid direct sunlight.

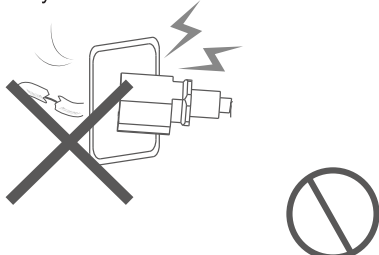
- The toilet may change color and work incorrectly.



Not Allowed

Do not use a receptacle that is loose or faulty.

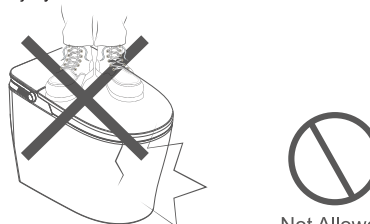
- May cause fire or electric shock.



Not Allowed

Do not place heavy objects or stand on the cover of the toilet seat. Do not hit the product.

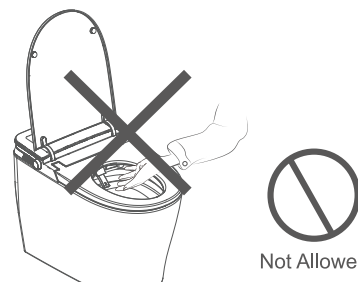
- Product breakage can result in personal injury.



Not Allowed

Do not put fingers or other objects in the nozzle.

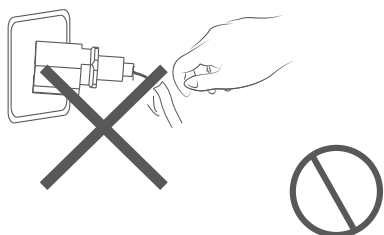
- May cause electric shock or malfunction.



Not Allowed

Do not remove or replace power cord.

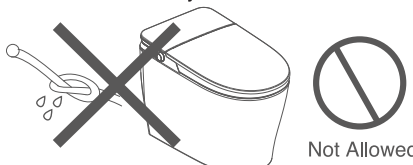
- If the power cord is damaged, it must be replaced by a licensed electrician.



Not Allowed

Do not twist or break supply line.

- Otherwise it may cause a leak.



Not Allowed

Please use new (included) Supply line

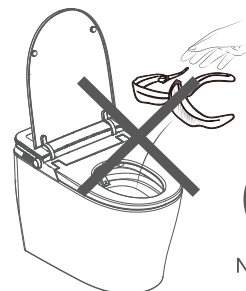
- Old Supply Line will cause the product to malfunction.



Compulsory

Do not flush foreign objects

- it may lead to clogging of the toilet and overflow of sewage.



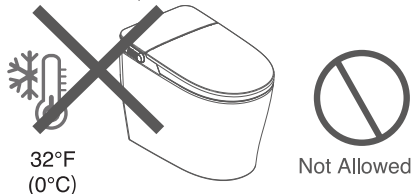
Not Allowed

Do not hit the ceramic with metallic objects to prevent leakage from damage.



Do not use below 32°F (0°C).

- Please refer to the instructions on long-term storage or winterizing below 32°F(0°C).

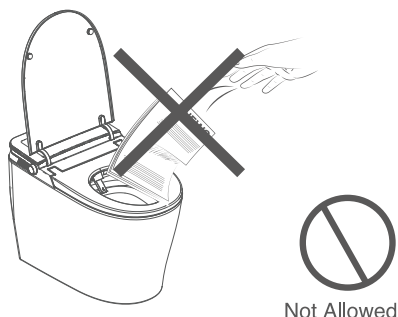


Only use non-abrasive dish washing detergent for cleaning toilet. Do not use cleaning chemicals for toilets, volatile agents, abrasice cleaners,etc.



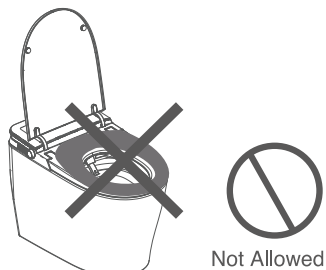
Do not flush newsprint, sanitary pads and other articles that may clog the toilet.

- It may lead to clogging of the toilet and overflow of sewage.



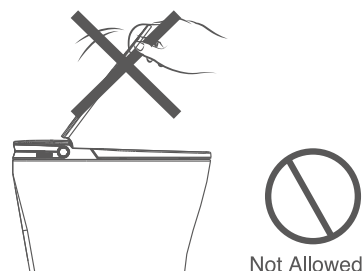
Please do not use cloth cover or cushion on seat.

- Will cause toilet malfunction.

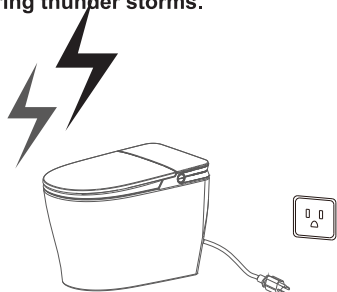


Do not force the lid or seat closed.

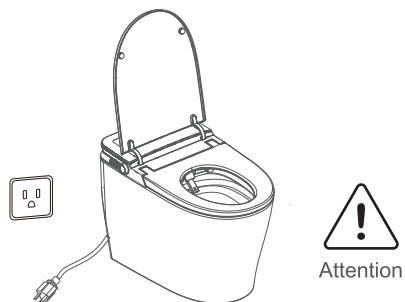
- The product may be damaged.



Unplug from receptacle for protection against power surges during thunder storms.

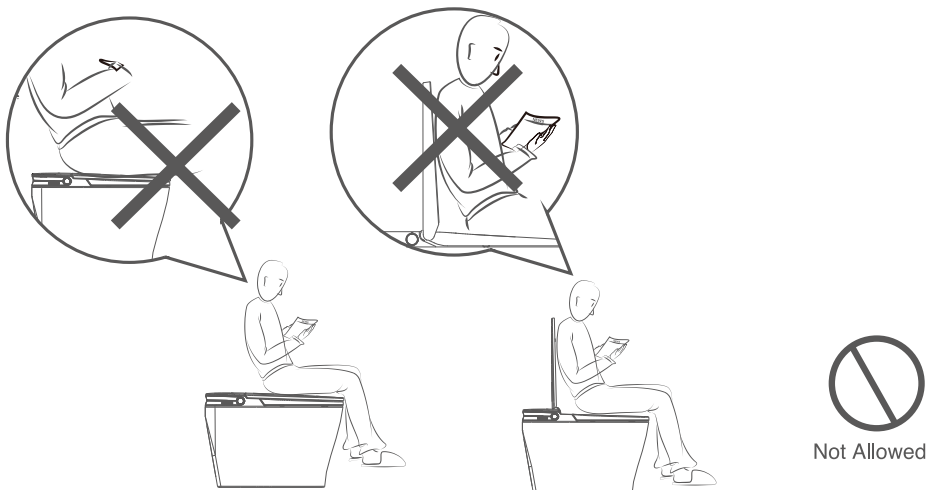


Unplug the unit if the toilet is backed up.



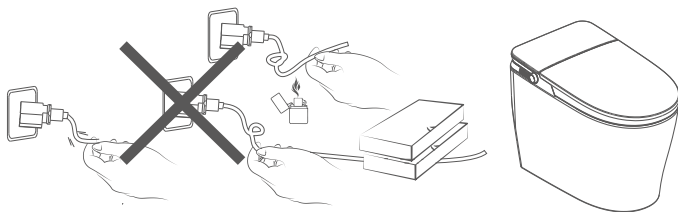
Please do not sit or put objects on the lid when it is closed, and do not lean on the lid when it is open.

- It may damage the lid or it may cause a malfunction.



Do not damage the power cord.

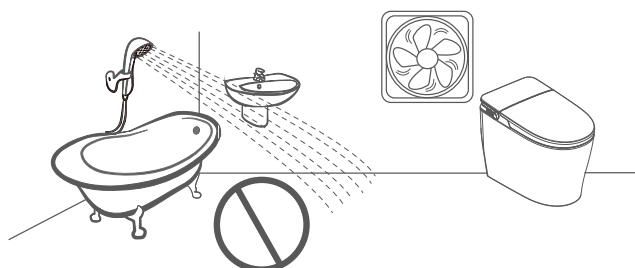
1. Avoid exposing the power cord to damage, wear, or excessive heat;
2. Do not bend, kink or pull power cord;
3. Do not place heavy objects or sharp objects on the power cord. Using the toilet with a damaged power cord may result in fire, short circuit, electric shock and other dangerous conditions.



Not Allowed

This is an electronic product, avoid places of high humidity and direct water splashing. Please install a bathroom fan to maintain good ventilation in the bathroom.

- Otherwise it could lead to malfunction, fire or electric shock.



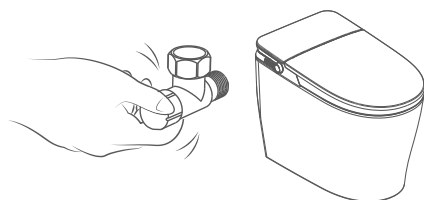
Not Allowed



Compulsory

In case of leakage, close the Angle valve.

- Avoid flooding, slipping or electric shock.



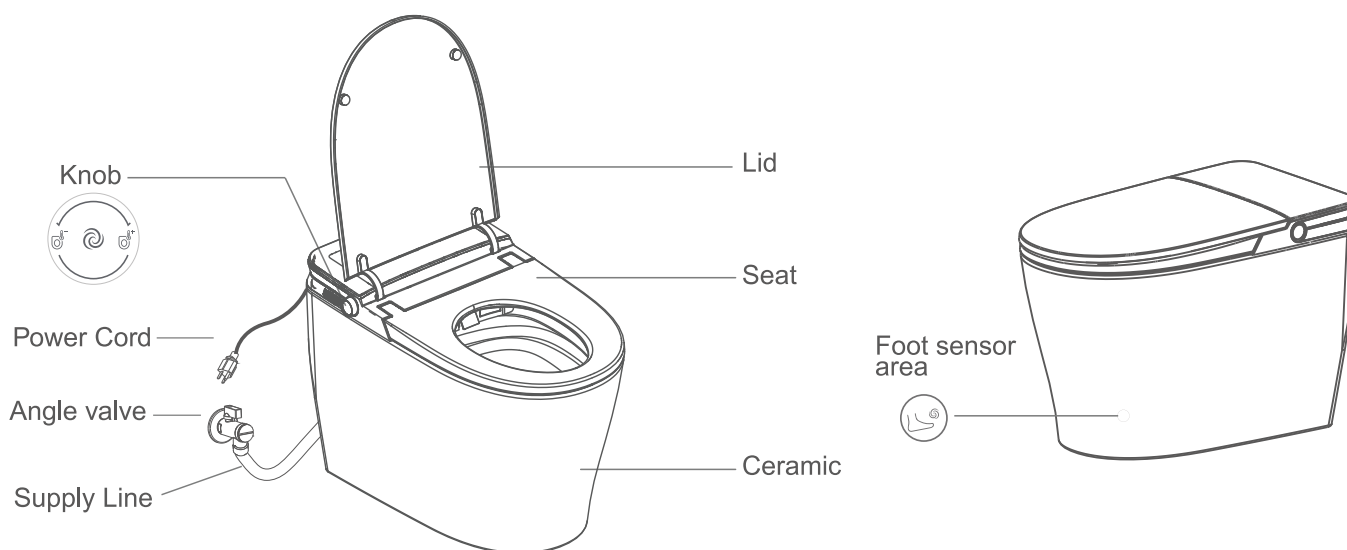
Prevent damage caused by freezing.

- Freezing temperatures will cause water in the supply line and in the toilet to freeze causing damage and water leakage.

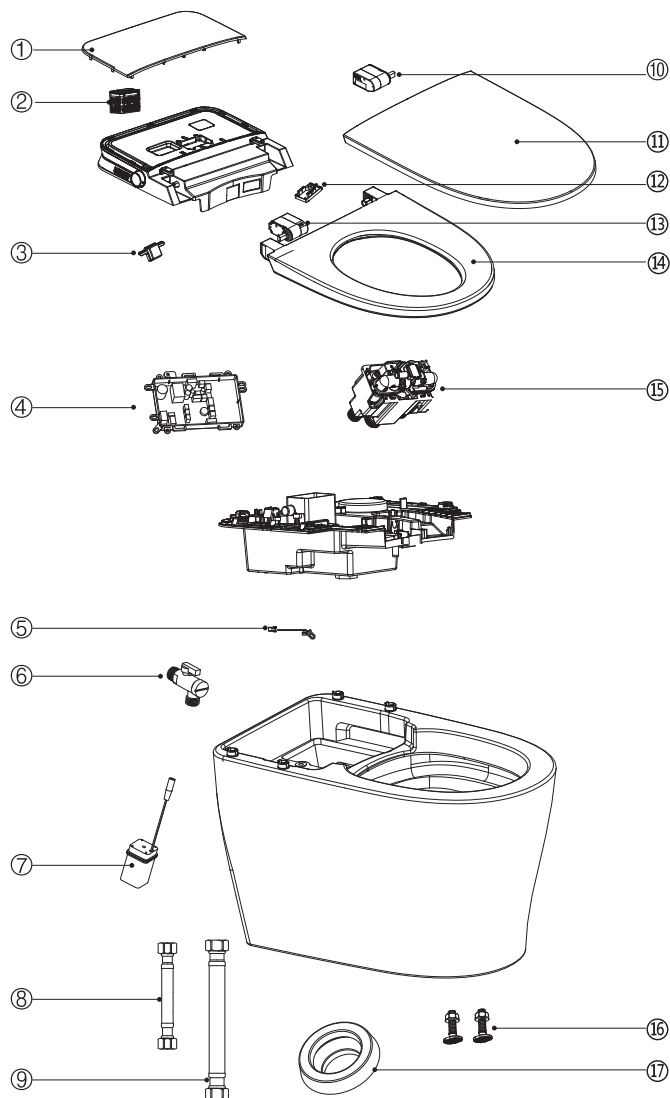


Attention

OVERALL MAJOR COMPONENTS



EXPLODED VIEW & PACKAGE CONTENTS



No.	Description
1	Decorative Cover
2	Deodorization Filter
3	Microwave Module
4	Main PCB
5	Night Light
6	Angle Valve
7	Battery Pack
8	23" (580mm) Hose (Pre-assembled)
9	28" (720mm) Supply Line (Pre-assembled)
10	Gearbox for Lid
11	Lid
12	Gearbox PCB
13	Gearbox for Seat
14	Seat Rim
15	Flush Valve
16	Floor Fixing Bolts & Screws
17	Wax Ring

Package Contents

Description	Qty
Wax Ring	1
Angle Valve	1
Battery Pack (4 X AA Batteries not included)	1
Floor Fixing Bolts & Screws	2
Stainless Steel Hose 23" (580mm)	1
Stainless Steel Hose 28" (720mm)	1

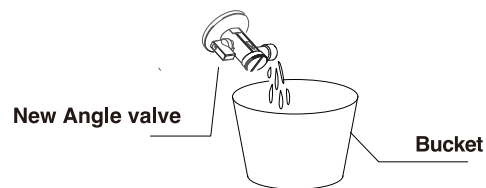
If you find any part missing, please call: (866) 231 8893
 Or email us at: mysupport@fornoworld.com
 Please do not return this **Smart Toilet** to the store before calling

SMART TOILET INSTALLATION

Check the Minimum Necessary Water Pressure and Flow Rate

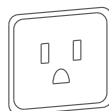
Minimum necessary water pressure: 20psi (0.14Mpa). Minimum flow rate: 4.75gpm (18L/min). The product will not work properly if the pressure or flow rate cannot be reached. (Please refer below if no water pressure test device is available).

Remove old angle valve and install supplied angle valve. Open new angle valve for 10 seconds. Check water volume. It should be higher than 0.8 Gallons (3 Litres) for the toilet to work properly.

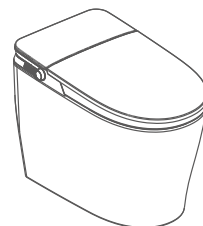
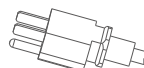


Confirm Power Supply

The power cord must be plugged into a GFCI receptacle or a receptacle in a GFCI protected circuit complying with: 120V 60Hz and 15A.

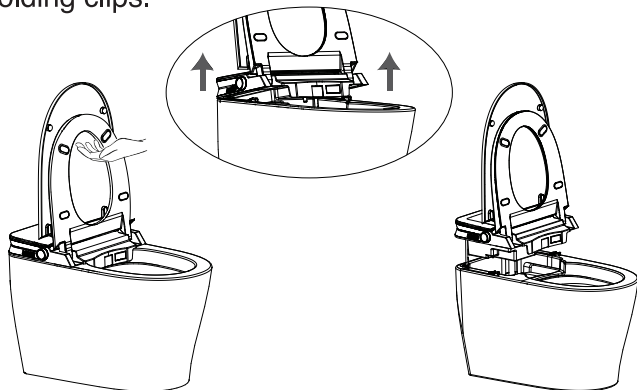


120V ☒
60Hz ☒
15A Above ☒

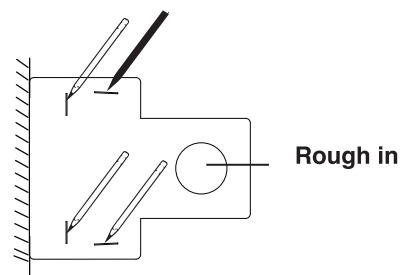


- (1) Do not spray water on the toilet.
- (2) If toilet is below 50°F (10°C), place it in a warm room for 2 hours before installing.
- (3) Failure to comply with the recommendations in the installation manual may lead to personal injury, electric shock or other accidents. Read and follow ALL the manual instructions.

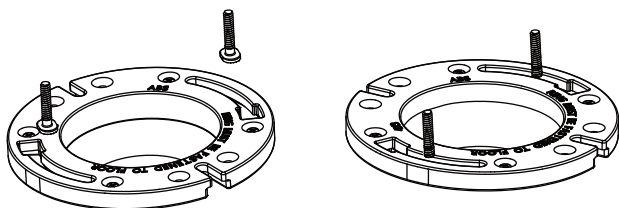
1. Open the lid and the seat. Holding firmly from the seat pull upwards to disengage the cover from the holding clips.



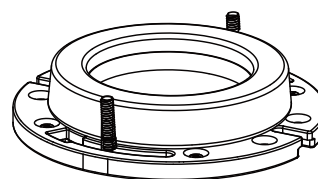
2. Place the installation template as shown below. Confirm rough in pipe. Trace the toilet back and side profile using the hollowed lines on template.



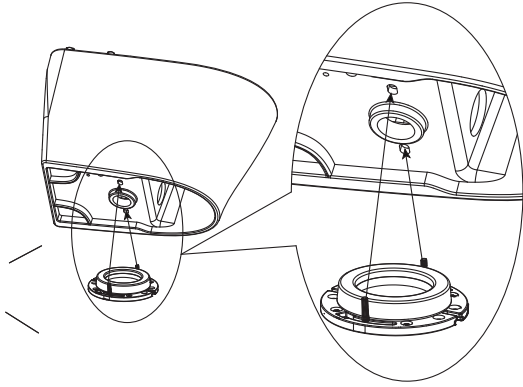
3. Place the bolts into the flange grooves.



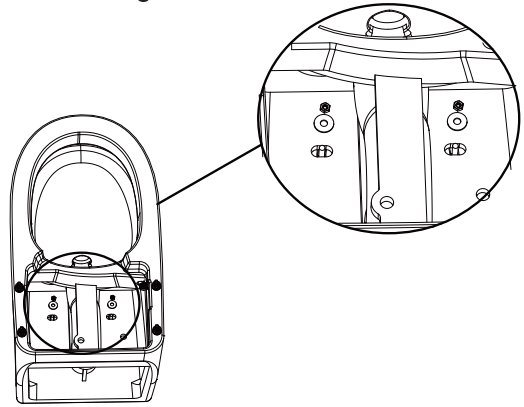
4. Install wax ring centering it on the flange.



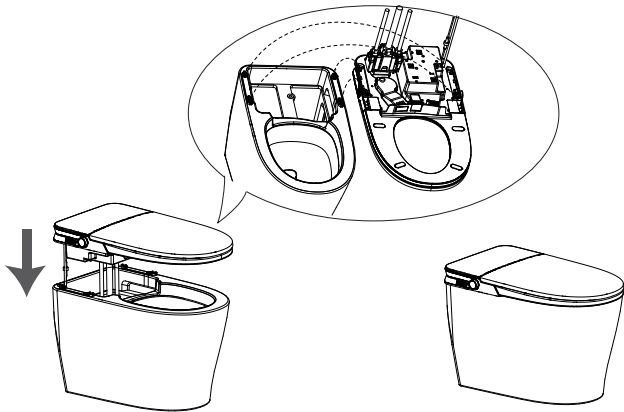
5. Install the ceramic aligning it to the contour lines you traced. **(Note: the fixing bolts need to pass through the holes at the bottom of the ceramic.)**



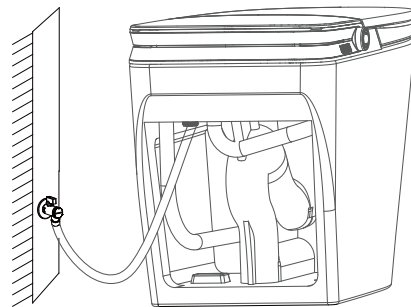
6. Install the washers and locking nuts securing the toilet to the flange.



7. Align 4 holding clips in the ceramic with the holes in the back part of the cover and push down.



8. Connect the supply line to the angle valve.



TESTING AFTER INSTALLATION

1. Turn on the angle valve

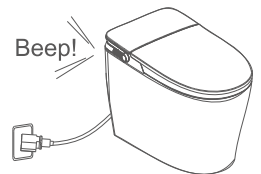
Open the angle valve a little bit. Check for leaks.

Open the valve completely after checking everything is dry.



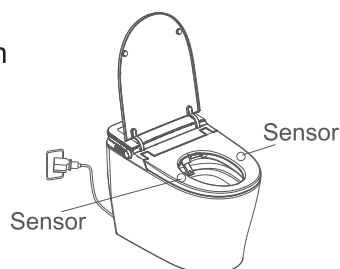
2. Product self-diagnosis

After connecting to the power supply, the toilet will give a "beep" sound. Knob light will go on indicating the completion of self-diagnosis.



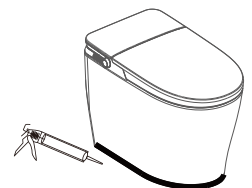
3. Flushing test

Press the flush button on the knob to flush the toilet.



4. Drainage inspection

Before applying the caulking, please flush the toilet several times to see if there is any leakage in the ceramic. After inspection caulk around the ceramic. Make sure that the ceramic is sealed in place.



FUNCTIONS

Function		Premium A CSTPA0	Premium B CSTPB0
Seat	Adjustable Seat Temp.	X	✓
	Anti-Bacterial	✓	✓
	Sensor	✓	✓
Seat & Cover Open	Auto Lid Open	✓	✓
	Foot Sensor Lid/Seat	✓	✓
Light	Night Light	✓	✓
	Knob Light	✓	✓
Deodorization	Catalyst Deodorization	✓	✓
Flushing	Off Seat Auto Flush	✓	✓
	Power Off Flush	✓	✓
	Foot Sensor Flush	✓	✓
	Side Knob Flushing	✓	✓

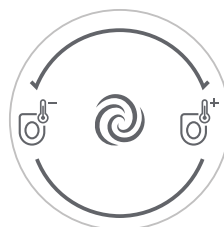
Power-on Self-check

- Each time the toilet is plugged in, all lights will go on, a “beep” will sound and all functions will be reset to factory settings.
- Seat temperature will default to 91°F (33°C).

Knob Operation



Premium A
CSTPA0



Premium B
CSTPB0

- Short press the knob to start a big flush.
- When nobody is seated, long press the knob for 3 seconds to enter the setting mode: the white light flashes
 - Rotate clockwise to set to silent mode, you will hear a long “beep”; rotate clockwise again to turn off silent mode, you will hear a short “beep”.
 - Rotate counterclockwise to turn off the night light, you will hear a long “beep”; rotate counterclockwise again to turn on the night light, you will hear a short “beep”.
- In the setting mode, long press the button again to turn on the microwave distance setting, the white light will flash. Each time you turn the knob clockwise the range will change:
 - The default range is 0.2~0.4m “beep” for Level 1
 - 0.2~0.8m “beep, beep” for Level 2
 - 0.2~1.2m “beep beep, beep” for Level 3
 - Turn off the microwave “long beep”
- If no operation is performed within 10 seconds, the last setting will be saved and the unit will exit setting mode.
- There is always prompting sound while setting mode.
- (Only for Premium B CSTPB0)**

Turn the knob clockwise to raise the seat temperature. Turn the knob counterclockwise to lower the seat temperature.

 - Prompt sound "didi" indicates highest temperature level has been reached.
 - Prompt sound "di" indicates one level of temperature lower.
 - Prompt "long beep" indicates seat heating is off.

Other functions

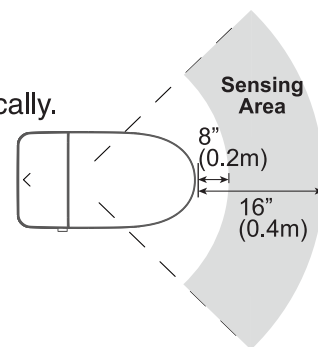
1. Seat temperature scald prevention function

After sitting down, the system will enter into a seat scald prevention mode automatically.

2. Auto lid open function

(a) When a person walks to the toilet and into the sensing area, the lid will open automatically.

(b) The lid will close automatically 1 minute after a person leaves the sensing area.



3. Foot sensor lid/seat open and flushing function

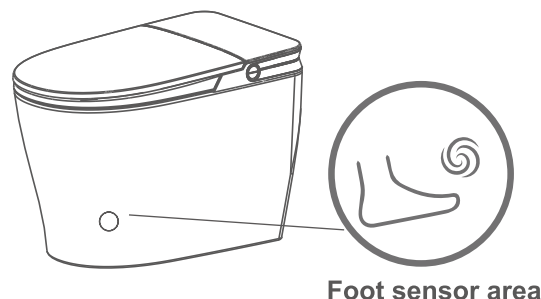
(a) When both the lid and seat are closed, the lid will open automatically once the user touches the foot sensor area.

(b) When the lid is open and seat is closed, the seat will open automatically once the user touches the foot sensor area.

(c) When the lid and seat are open, both of them will close and start a small flush once the user touches the foot sensor area.

(d) If someone who has been sitting in the seat for under 2 min. touches the foot sensor, the lid will close and a small flush will start.

(e) If someone who has been sitting in the seat for over 2 min. touches the foot sensor, the lid will close and a large flush will start.



4. Automatic flush

The toilet will close seat, close lid and flush automatically 1 minute after a person leaves the toilet sensing area (If a flush is executed before the lid is closed, the toilet will not flush automatically again.)

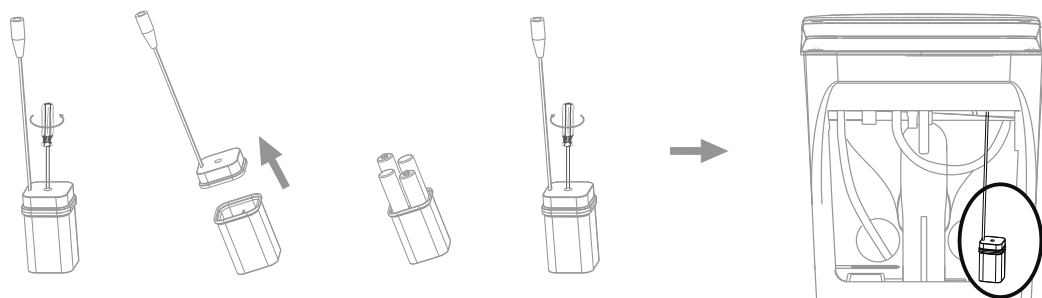
5. Automatic Deodorization

When the device is in the powered-on state and a person is seated, the deodorization fan will automatically turn on. When a person leaves the seat, the deodorization fan will remain on and automatically turn off after one minute. When the flushing is working, the deodorization fan will stop.

6. Power off flush function

When power is off, the battery pack will take over. Short press the knob to flush. No other function will work. The batteries should last for 100 flushes.

Changing / Inserting Batteries:



(a) Open the battery pack with a Phillips screwdriver.

(b) Remove the battery tray.

(c) Following recommendations in Battery Reminder below, load 4 size AA batteries (not supplied) into the battery tray being careful with the polarity of the batteries.

(d) Re-assemble the battery pack and install in the toilet.

BATTERY REMINDER

1. This toilet is designed to flush using batteries only during a power outage. Check batteries at least once a year to ensure they are in good working condition.
2. Strictly follow the "+" and "-" signs in the battery pack when inserting batteries. Reverse connecting batteries may cause battery damage and safety hazards such as explosion or combustion.
3. Only size recommended batteries should be used. Old and new batteries should not be mixed. Different models and brands of batteries should not be mixed. When replacing batteries, all of them should be replaced at the same time.
4. Clean the battery contacts and also those of the device prior to battery installation.
5. Remove batteries from equipment that is not to be used for an extended period of time.
6. Remove used batteries promptly.
7. Handle battery pack with care. After replacing the batteries, make sure the battery pack is securely locked and sealed to prevent bathroom moisture from entering the compartment (this could cause battery corrosion and damage).
8. When replacing batteries, disconnect the battery compartment from the main unit.
9. DO NOT USE RECHARGEABLE BATTERIES.

CLEANING AND MAINTENANCE

1. Maintenance of product surface and ceramics

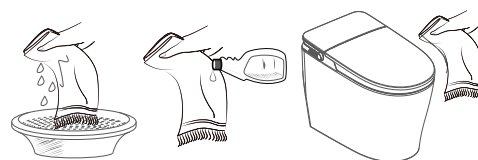
The detachable accessories can be removed before maintenance.

Note before maintenance:

- (1) Make sure the power supply is disconnected.
- (2) Do not let water enter the product during the maintenance process.
- (3) Be sure to wipe off any detergent after cleaning to avoid residue at the gap between the main ceramic body and the cover.

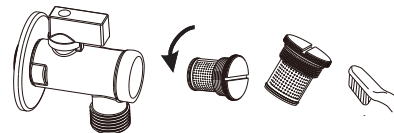
Product surface cleaning

Wet a soft cloth with water, wring it, and then wipe the product. If the toilet is dirty, you can use a soft cloth with a little diluted neutral detergent to clean it. Then use a clean damp cloth to wipe it clean.



2. Maintenance of valve if water performance is low

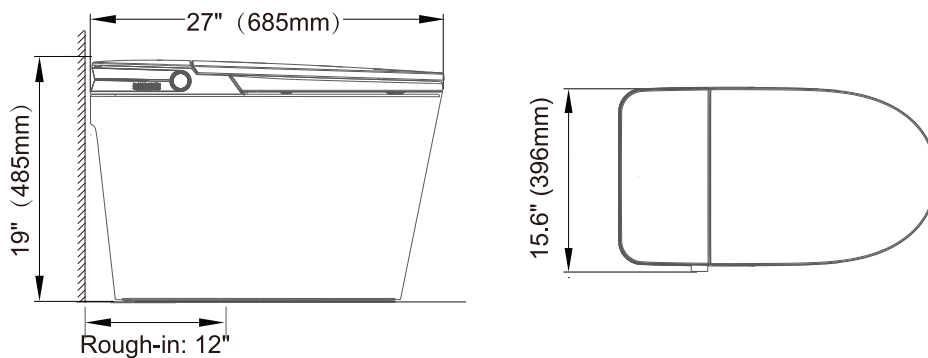
- (1) Turn off the angle valve. Unscrew the filter screen cap at the front of the valve with a straight screwdriver.
- (2) Use a small brush to scrub the filter screen, and flush away debris with clean water.
- (3) Reinstall the filter on to the angle valve and tighten it.



TROUBLESHOOTING

ISSUE	PROBLEM	CHECK	SOLUTION
1. General	The toilet does not work	Check whether cloth covers, cushions, etc. are being used on the seat sensing area.	Remove cloth covers, cushions or any other items.
		Check if there is a power outage.	Wait for power supply recovery.
		Check if the plug is loose or making poor contact.	Plug in to ensure good power supply.
		Check if there has been electricity leakage (the GFCI receptacle indicator light is off or the GFCI breaker has tripped).	Unplug the power plug. Press the reset button on the GFCI receptacle or reset the GFCI breaker. If it still does not work, contact customer service.
2. Flushing	The toilet does not flush	Angle valve is closed.	Open the angle valve.
	The toilet does not flush properly	The filter is blocked.	Refer to Maintenance of the Valve.
3. Seat (Only for Premium B CSTPB0)	The seat is not heating.	The filter is blocked.	Refer to Maintenance of the Valve.
		Check if the seat temperature is set to low or off.	Reset the seat temperature using the seat temperature knob.
		Check if there is power outage.	Wait for power supply recovery.
4. Lights	Toilet light and knob light does not work.	Check if the fault still exists after doing a reset by unplugging, waiting 20 seconds and re-plugging unit.	Contact Customer Service.

TECHNICAL DATA



Items		Premium A CSTPA0	Premium B CSTPB0
Rated Voltage		120V ~ 60Hz	120V ~ 60Hz
Rated Power		9.5W	55W
Power Cord Length		35.83" (0.91M)	35.83" (0.91M)
Water Supply Pressure		Min. Dynamic Pressure: 20PSI (0.14MPa)	Min. Dynamic Pressure: 20PSI (0.14MPa)
		Max. Static Pressure: 110PSI (0.75MPa)	Max. Static Pressure: 110PSI (0.75MPa)
Water Supply Temperature		41~95°F (5~35°C)	41~95°F (5~35°C)
Waterproof Level		IPX4	IPX4
Toilet Flush		≤1.26G (4.8L)	≤1.26G (4.8L)
Seat Ring Heating	Heater power	N/A	50W
	Safety equipment	N/A	Thermostat + fuse
	Surface temperature	N/A	3 levels: 91/100°F/OFF (33/38°C/OFF)
Deodorization	Deodorization method	Catalyst	Catalyst
Others	Antibacterial material	Seat ring	Seat ring
	Low temperature scald protection	N/A	Available
	Prompt for abnormalities	Alarm sound	Alarm sound
	Seat sensing	Available	Available
	Lighting control	Available	Available

COMMUNICATION DEVICE CAUTIONS

The FCC and the IC require for us to place the following warnings in the manuals of every communication device that is tested to meet their standards:

FCC Compliance

Warning: Changes or modifications to this unit not expressly approved by the party responsible for compliance could void the user's authority to operate the equipment.

NOTE: This equipment has been tested and found to comply with the limits for a Class B digital device, pursuant to Part 15 of the FCC Rules. These limits are designed to provide reasonable protection against harmful interference in a residential installation. This equipment generates, uses and can radiate radio frequency energy and, if not installed and used in accordance with the instructions, may cause harmful interference to radio communications.

However, there is no guarantee that interference will not occur in a particular installation. If this equipment does cause harmful interference to radio or television reception, which can be determined by turning the equipment off and on, the user is encouraged to try to correct the interference by one or more of the following measures:

- * Reorient or relocate the receiving antenna.
- * Increase the separation between the equipment and receiver.
- * Connect the equipment into an outlet on a circuit different from that to which the receiver is connected.
- * Consult the dealer or an experienced radio/TV technician for help.

This device complies with Part 15 of the FCC Rules. Operation is subject to the following two conditions:

1. This device may not cause harmful interference, and
2. This device must accept any interference received, including interference that may cause undesired operation.

Caution: To maintain compliance with the FCC's RF exposure guidelines, place the product at least 20cm from nearby persons.

Warranty

CTM Maison Elite Inc. grants this limited warranty to the original purchaser of this **Smart Toilet** from the date of purchase. Proof of purchase is required when requesting any warranty assistance.

Limited Two Years: CTM Maison Elite Inc. warrants that all parts, to be free from defects in workmanship and material at the time of manufacture for a period of two years. We agree to send a replacement part without charge or at our option replace it with a comparable or superior part at our sole discretion.

To the extent permitted by law, CTM Maison Elite Inc. disclaims any and all warranties, including but not limited to those of merchantability and fitness for a particular purpose. There is no other express warranty. The duration of any implied warranty which cannot be disclaimed is limited to the period specified in the express warranty. Some states do not allow a limitation on how long an implied warranty lasts. The time limitation may not apply to you. Some states do not allow the exclusion of incidental or consequential damages, so the above limitation may not apply to you. This warranty gives specific legal rights. You may also have other rights which vary from state to state. The retailer shall not be liable for incidental, consequential, or damages arising out of or in connection with product use or performance except as may otherwise be accorded by law.

This limited warranty is non-transferable and only to the original purchaser of this **Smart Toilet** and will be void if unit is removed from its original installation.

This warranty does not cover: ordinary wear and tear, minor cosmetic blemishes, refurbished units, ceramic toilets that are not owned by the original purchaser, acts of God, changes in finish including rusting, pitting, corroding, tarnishing, or peeling.

Damage to any part by accident, misuse, abuse, improper installation, dents and/or scratches incurred during shipping, handling, or installation, bends or warping caused by forced connections, over-tightened fittings, and/or inadequate support during installation, improper care and maintenance, failure to follow the instructions in the enclosed manual or any modification to the unit are not covered by this warranty.

All costs of shipping parts, removing, repair labour and reinstalling the product are not covered by this warranty. Please do not ship your stainless steel sink or any parts to CTM Maison Elite Inc. Shipment will not be accepted.

This warranty supersedes all prior warranties.



Customer Care

Thank you for purchasing a FORNO ACQUA product. Please read the entire instruction manual before operating your new Smart Toilet for the first time. Whether you are an occasional user or an expert, it will be beneficial to familiarize yourself with the safety practices, features, operation and care recommendations of your Smart Toilet. Both the model number and serial number are listed on the product. For warranty purposes, you will also need the date of purchase. Record this information below for future reference.

SERVICE INFORMATION

Model Number

Use these numbers in any correspondence or service calls concerning your Smart Toilet.

Serial Number

If you received a damaged Smart Toilet, immediately contact the dealer (or builder) that sold you the Smart Toilet.

Date of Purchase

Purchase Address & Phone

Save time and money. Before you call for service, check the Troubleshooting Guide. It lists the causes of minor operating problems that you can correct yourself.

CUSTOMER SERVICE

Keep the instruction manual handy to answer your questions. If you don't understand something or you need more assistance, please call our Customer Service: 1-866-231-8893

Or email: mysupport@fornoworld.com

Our contact: CTM Maison Elite Inc.

11420 Albert Hudon, Montréal, Québec H1G 3J6, Canada

The instruction manual can be downloaded from www.fornoworld.com

CTM Maison Elite Inc.

11420 Albert Hudon, Montréal, Québec H1G 3J6, Canada
1-866-231-8893 • info@CTMMaisonElite.com • CTMMaisonElite.com